

SPRING  
2022

# The Heat of the Moment

Page 6



MEET THE  
PROVOST

.....  
P 12

DATA-DRIVEN  
RESEARCH

.....  
P 16

HISTORIC  
NEWSPAPERS

.....  
P 18

COMMUNITY  
GRANTS

.....  
P 21

MIDTOWN  
UPDATE

.....  
P 24



VOLUME 48, ISSUE 1

**EDITOR**

Laura Geiser  
{A&S '90, Grad '92}

**ASSOCIATE EDITOR**

Amy Garland {A&S '97}

**ART DIRECTOR**

Matt Krob

**CONTRIBUTORS**

Joe Barker  
Marie Dilg {Grad SW '94}  
Bridjes O'Neil

**ON CAMPUS NEWS  
STORIES**

University Public  
Relations  
Billiken Media Relations

**ON THE COVER**

Illustration by  
Robert Neubecker

*Universitas* is published by Saint Louis University. Opinions expressed in *Universitas* are those of the individual authors and not necessarily those of the University administration. Unsolicited manuscripts and photographs are welcome but will be returned only if accompanied by a stamped, self-addressed envelope. Letters to the editor must be signed, and letters not intended for publication should indicate that fact. The editor reserves the right to edit all items.

Address all mail to:  
*Universitas*  
DuBourg Hall 39  
1 N. Grand Blvd.  
St. Louis, MO 63103  
We accept email at:  
universitas@slu.edu

Website: [slu.edu/universitas](http://slu.edu/universitas)

*Universitas* is printed  
by Breese Printing  
and Publishing

Worldwide circulation:  
125,652

©2022, Saint Louis University  
All rights reserved.

Reproduction in whole  
or in part without  
permission is prohibited.



## University Welcomes Second-Largest Freshman Class

The 2021-22 freshman class of 1,794 students is the second-largest in Saint Louis University history — trailing 2019's record class.

students:

- The class of 2025 has an average GPA of 3.92.
- Members of the class come from 46 American states and provinces. The top five states outside of Missouri represented are Illinois, Wisconsin, California, Texas, and Florida.

**D**r. Jack Fishman teaches an undergraduate course about climate change every semester at Saint Louis University — and each time, he said it feels more urgent than ever.

“Last fall, in the first week of classes we were hearing about the unprecedented flooding in New Jersey from the remnants of Hurricane Ida that devastated Louisiana, the record wildfires in California, the hottest temperatures ever measured in both Oregon and Washington, and the prolonged drought throughout the western United States. All at once. Tens of millions affected,” he said. “So, yes, we talk about the climate as the crisis it is. Hopefully, the students become inspired to do something about it.”

There is no denying that the climate is in crisis. As a Jesuit university, SLU is in a unique position to illustrate that we have a moral obligation to do something about it.

Fishman (Grad A&S '74, '77), a professor of earth and atmospheric sciences, knew this as he coordinated the Saint Louis Climate Summit hosted by the University in 2018, a response to Pope Francis' 2015 encyclical, *Laudato Si'*. Fishman, an SLU alum, isw 0.005 1.729 Td[



# The Heat of the Moment

Illustrations by Robert Neubecker  
Photos by Steve Dolan

## A Breath of Fresh Air

“I have a project in Korea, and we looked at that when COVID shut everything down,” he said. “All of a sudden, everything changed; we could ask, what difference did that make? The circumstances set up a natural experiment to see before and after.”

The obvious reduction in pollution “reminded us that it’s nice to have good air,” de Foy said.

“But I don’t want people to think that atmospheric scientists would just like to close the economy down,” he con





## All Creatures, Large ...

**AS HE TELLS HIS STORY, DR. STEPHEN BLAKE'S ROLE AS A RESEARCHER OF MEGA-VERTEBRATES WAS SERENDIPITOUS.**

"I didn't want a normal job, and I like being outdoors," he said. "After university, I wrote to a zoo and asked for a job, any job. A window cleaner and path sweep — you want that? Fair enough. That morphed into becoming a gorilla keeper in England.

Then they set up a gorilla protection project in Congo and asked me if I wanted to work there. One thing leads to another."

In Blake's case, gorillas led to elephants led to tortoises, with other species along the way. He describes his work as "muddy boots conservation and research" — studying movement ecology, how animals travel from one place

to another. Elephants have a much greater volume per unit volume than fast-growing trees. Thus, the elephants enable the forest to sequester and store more carbon, keeping it out of the atmosphere. If forest elephants disappear, over time the forest will become dominated by fast-growing tree species, and its carbon-storage potential will drop.

"Forest elephants are forest gardeners that store carbon in their bodies and in the soil."



## ... and Small

**THE AVERAGE PERSON PROBABLY THINKS OF INSECTS AS PESTS, SWATTING THEM AWAY OR TRYING TO ELIMINATE THEM ALTOGETHER. Not Dr. Kasey Fowler-Finn.**

An associate professor of biology, Fowler-Finn finds insects to be an endless source of information about how organisms might adapt to climate change.

Insects provide the foundation for ecosystems: They pollinate crops, cycle nutrients through

the soil, help control the populations of other organisms, and more.

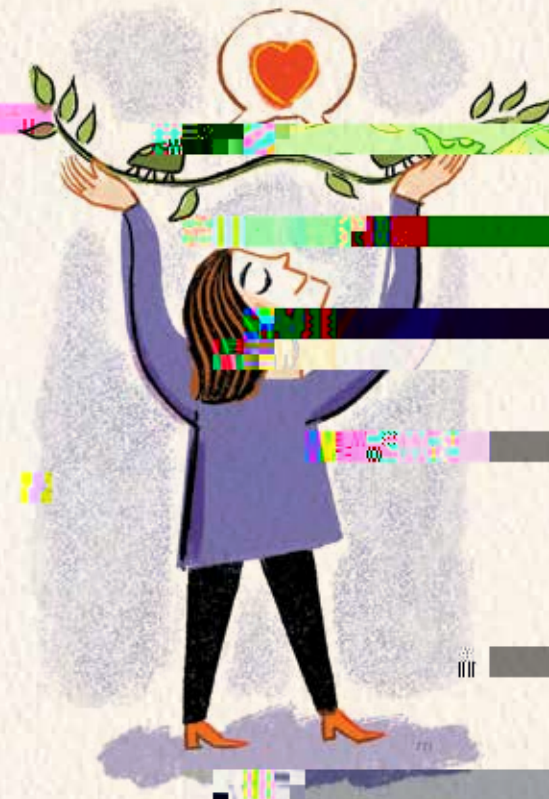
If rising temperatures affect a certain species, the entire ecosystem could suffer. We need to pay attention to them.

"Plus, they're adorable!" Fowler-Finn

notes about the treehopper, a half-centimeter-long insect and a subject of her research.

A few years ago, the National Science Foundation granted Fowler-Finn just over \$640,000 to study how changing temperatures affect treehoppers' mating behavior.

During mating season, male treehoppers



**FOR THOSE WHO DON'T WORK** in academia — or who graduated from Saint Louis University before the 1990s — the title of provost might be unfamiliar. Even researching the word might not help, since *Webster's New World Dictionary* defines the word with two definitions, including “the chief magistrate of a Scottish burgh” and “a jailer.”

Though a university provost leads and maintains order, those definitions don't quite hit the mark.

*Webster's* does: “in certain American universities, an administrative

At SLU, the provost is integral to the University's overseeing the entire educational enterprise.



**What attracted you to SLU? And what has kept you here?**

As associate provost and now as provost, I've been involved in new faculty



**D**R. THOMAS FINAN, ASSOCIATE PROFESSOR and chair of the Department of History, said his faculty members are “absolutely thrilled” about a recent gift to University – a collection of 850 newspapers dating from 1683 to 2020.

to have students work with the newspapers this semester,” Finan said. “We emphasize the use of primary source research (firsthand accounts) with our students, and when you can put original documents into their hands, whether it’s a manuscript, a newspaper, a letter or a photograph, it’s a game changer. They’re engaging with history on a whole new level because they’re handling the actual sources, not transcriptions.”

#### **POWER OF THE PRESS**

Newspapers in the collection chronicle major milestones throughout history — from the ratification of the U.S. Constitution, Neil Armstrong’s walk on the moon and the election of President Barack Obama — to the darkest moments, including the assassination of



# SMALL CHANGE, BIG DIFFERENCE

**1818 Community Engagement Grants  
enable servant leaders to find  
innovative ways to make a difference.**

**T**he 1818 Community Engagement Grant Program has only been around since 2018, but it is already making a big impact. The program, which was launched during Saint Louis University's bicentennial celebration, annually awards 18 grants of up to \$1,000 each to groups of SLU students and faculty, in partnership with a local

the St. Louis community. To date, more than 1,000 students and faculty have partnered with nearly 100

In response to the COVID-19 pandemic, the 2019-20 grant cycle saw an almost 50% increase in the number of SLU participants in the program. Several projects focused on partnerships to expand relief efforts. While scaled back slightly, the projects had no less of an impact during the 2020-21 grant cycle, said Dr. Bobby Wassel (Grad Ed '09, '17), assistant director of SLU's Center for Social Action.

"From setting up virtual visits with residents of a local residential care facility to developing an infor-



# A DE NEIGHBORHOOD

plots and boarded-up buildings used to be, recreation spots, restaurants and

—BY AMY GARLAND



## FOOD HALL AT CITY FOUNDRY STL

**JUST STEPS FROM** Saint Louis University's north campus, on the former site of the Century Electric Co. and Federal Mogul foundry, City Foundry STL continues to transform the Midtown landscape. A 300,000-square-foot, multi-use development overseen by the St. Louis-based New + Found, the Foundry features dining, shops,

## FRESH THYME MARKET

**ON THE NORTHEAST CORNER** of the City Foundry STL site is the new Fresh Thyme Market, which opened in November. The 27,000-square-foot grocery store sits at the corner of Forest

## TARGET

8 o j    □ o 1    \_    =

•!•    í 8 o    !•    !Ä o" ~ 1    \_    =

ANDRÉS J. GALLEGOS

**W**hen Joe Biden was elected president in November 2020, Andrés J. Gallegos (Law '93)

knew the Nation's... 8! □ b 0! = o ! !), 00<)> 98 40 < 4 312 4618 00 07) 461112 < 217 4612 4612 00 07) 461112 < e17 4612 4612 00 07)

'48

... ,  
 ... ,  
 ... ,  
 ( ) ,  
 1 30 .  
 ... ,  
 ... ,  
 ( , , ) .

“My mom took us to the  
 Muny all the time, to  
 sit in the free seats  
 and be dazzled.”

'67



### 1997

Dr. Tracy Pascua Dea (A&S '97, GRAD ED '09)

Michael P. McMillan (A&S),

2020 St. Louis American

### 1999

Tim Edwards (CSB '99, GRAD CSB '00)

Matthew Porter (PC)

20

### 2001

Dr. Susan (Junge) Peters (GRAD CSB)

Neely Tamminga (CSB)

2020,

Brenda Maloney Shafer (LAW),

### 2002

Jim Schroeder (GRAD A&S '02, '05)

### 2006

Kate Biagi-Rickert (CSB '06, SW '06)

Confessions of a Carless Commuter: What 40,000+ Motorless Miles Taught Me About Life

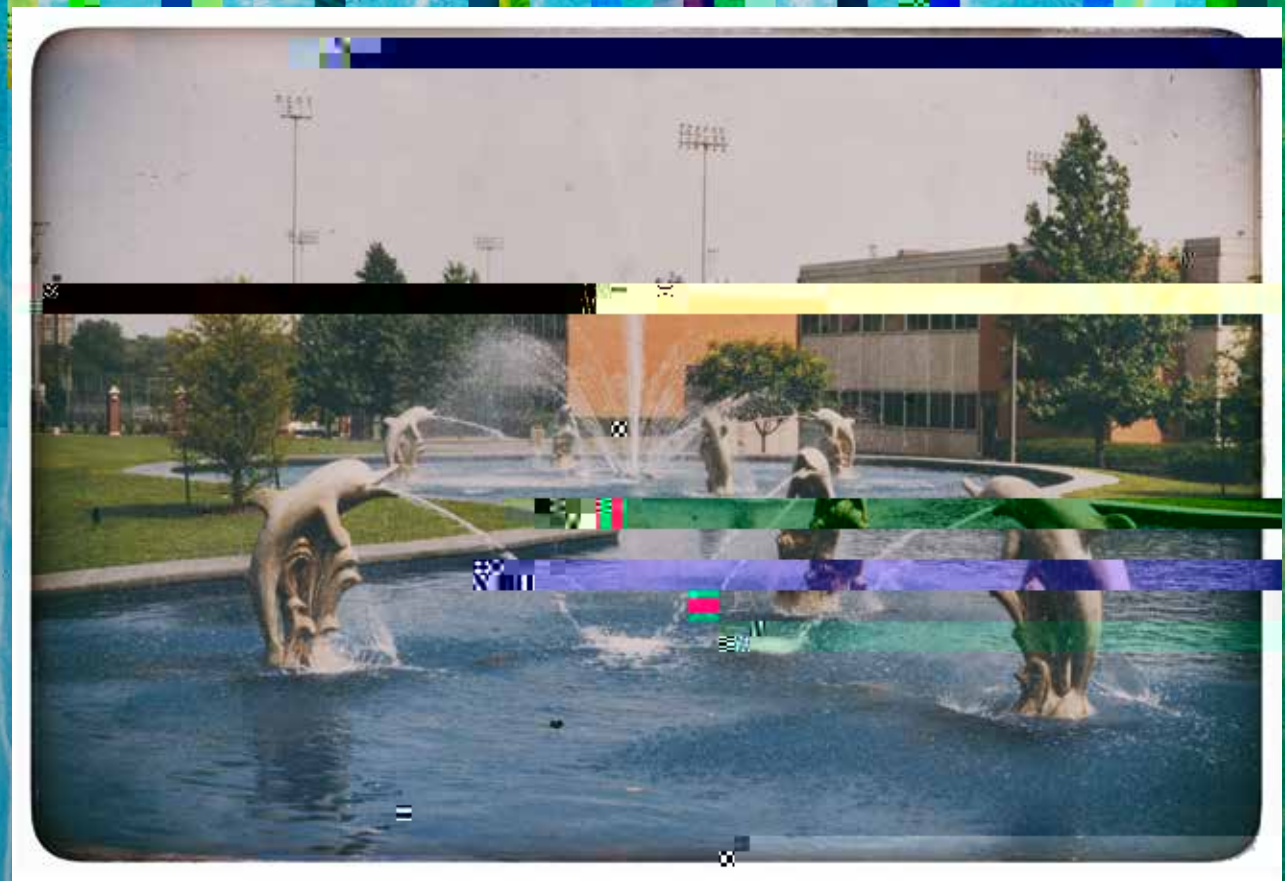






Fr. Padbe, S.J.

F



### THREE DECADES OF DOLPHINS

The Dolphin Pond was installed in spring 1992 near Ritter Hall. When its construction was announced, it was referred to as a “reflection pond,” only later taking on the Dolphin Pond name thanks to its seven concrete dolphins. In 1992, the *Archive* yearbook said the pond “created a stir but quickly became part of the scenery.”

### A CAMPUS LANDMARK

The irregularly shaped water feature was approximately 120 feet long and 50 feet wide and included a 20-foot fountain. In its 26 years near Ritter Hall, the Dolphin Pond became a landmark, a place to meet and relax. In the mid 2010s, hammocks were installed nearby, increasing the area’s popularity.

### SURVEY SAYS

In the fall of 2018, it was announced that the Dolphin Pond would need to be removed due to the construction of the Interdisciplinary Science and Engineering Building. Soon after, members of the SLU community were invited to help determine where the pond should be relocated. More than 2,700 people voted in an online poll, and the “Grand Lawn” — the grassy area adjacent to Grand Hall, just west of Grand Boulevard — was the clear winner with nearly 1,700 votes.

### STATUES IN STORAGE

As the pond area was taken over with ISE Building construction work, the seven dolphin statues were carefully removed from the site and safely stored in a campus warehouse, where they have lived for more than three years.

ACCELERATING

E

*The Campaign for* SAINT LOUIS UNIVERSITY

