

objectives need to be enhanced or revised) as well as the extent to which our primary assessment artifact (i.e., the BACCJ Capstone project) still captures students' attainment of our LOs and/or if we need to develop a better tool (e.g., an exit exam). We decided to develop a mater measure and that remains in process and was piloted in the Spring..

Capstone assignment information, rubric, and grading form are all attached at the end of this report.

...to the implementation of our plan, and the tools

[Redacted content]

(e.g., assignments, rubrics, etc.) used to engage in this important endeavor.

B. How specifically have you decided to use these findings to improve teaching and learning in your program? For example, perhaps you've initiated one or more of the following:

- Changes to the _____
- Course content _____
- Course sequence _____
- New courses _____

[Redacted content]

Customs Paper

As an integrative exercise bringing together the various strands of your CCJ training, each of you will write a major thesis paper. This paper will be worked on throughout the semester and will be

Section 2: Theory (2-4 pages)

You need to engage in a sophisticated and nuanced discussion of which theory or theories

Section 3: Literature Review (6-8 pages)

In this section, you should discuss the literature related to your research topic. This section should be organized into paragraphs that discuss the literature in a logical and coherent manner. You should use the following guidelines to structure your literature review:

1. Start with a general overview of the literature in your field. This should include a discussion of the major theories and concepts that have been developed in your field.

2. Then, move to a more specific discussion of the literature that is most relevant to your research topic. This should include a discussion of the major studies and findings in your field.

3. Finally, discuss the literature that is most directly related to your research topic. This should include a discussion of the major studies and findings that have been published in your field.

4. In your discussion, you should identify the strengths and weaknesses of the literature in your field. This should include a discussion of the methodological issues that have been raised in the literature.

5. Finally, you should discuss the implications of the literature for your research. This should include a discussion of the research questions that have been raised in the literature and the implications of your research for the field.

6. In your discussion, you should also identify the gaps in the literature and the need for your research. This should include a discussion of the research questions that have not been addressed in the literature.

7. Finally, you should discuss the contributions of your research to the field. This should include a discussion of the research questions that you have addressed and the implications of your research for the field.

8. In your discussion, you should also identify the limitations of your research. This should include a discussion of the methodological issues that have been raised in your research.

9. Finally, you should discuss the implications of your research for the field. This should include a discussion of the research questions that you have addressed and the implications of your research for the field.

10. In your discussion, you should also identify the contributions of your research to the field. This should include a discussion of the research questions that you have addressed and the implications of your research for the field.

11. Finally, you should discuss the implications of your research for the field. This should include a discussion of the research questions that you have addressed and the implications of your research for the field.

12. In your discussion, you should also identify the contributions of your research to the field. This should include a discussion of the research questions that you have addressed and the implications of your research for the field.

13. Finally, you should discuss the implications of your research for the field. This should include a discussion of the research questions that you have addressed and the implications of your research for the field.

14. In your discussion, you should also identify the contributions of your research to the field. This should include a discussion of the research questions that you have addressed and the implications of your research for the field.

15. Finally, you should discuss the implications of your research for the field. This should include a discussion of the research questions that you have addressed and the implications of your research for the field.

It must be concrete, specific, and thorough. Remember your policy must be substantive, not symbolic, and must be evidence-based (it should be obvious to me how the evidence was

discussed in the lit review would lead to your selection of the literature you reviewed

justice? Is your policy primarily concerned with advancing social order (crime control) or protecting individual rights (due process)? What safeguards might be necessary to ensure that your policy is implemented appropriately? Is it analogous to other aspects of the system, and/or have similar policies already been enacted?

Cost/Benefit Analysis. Evaluate your policy in terms of efficiency; what resources will you need to carry out your policy? How much will it cost? What are your potential cost savings? Explain

You will need to refute potential critiques. Be sure to cite literature that supports your policy's

Intervention effect. How will you know if your policy is a success? How will assessments be used to improve the policy?

Also:

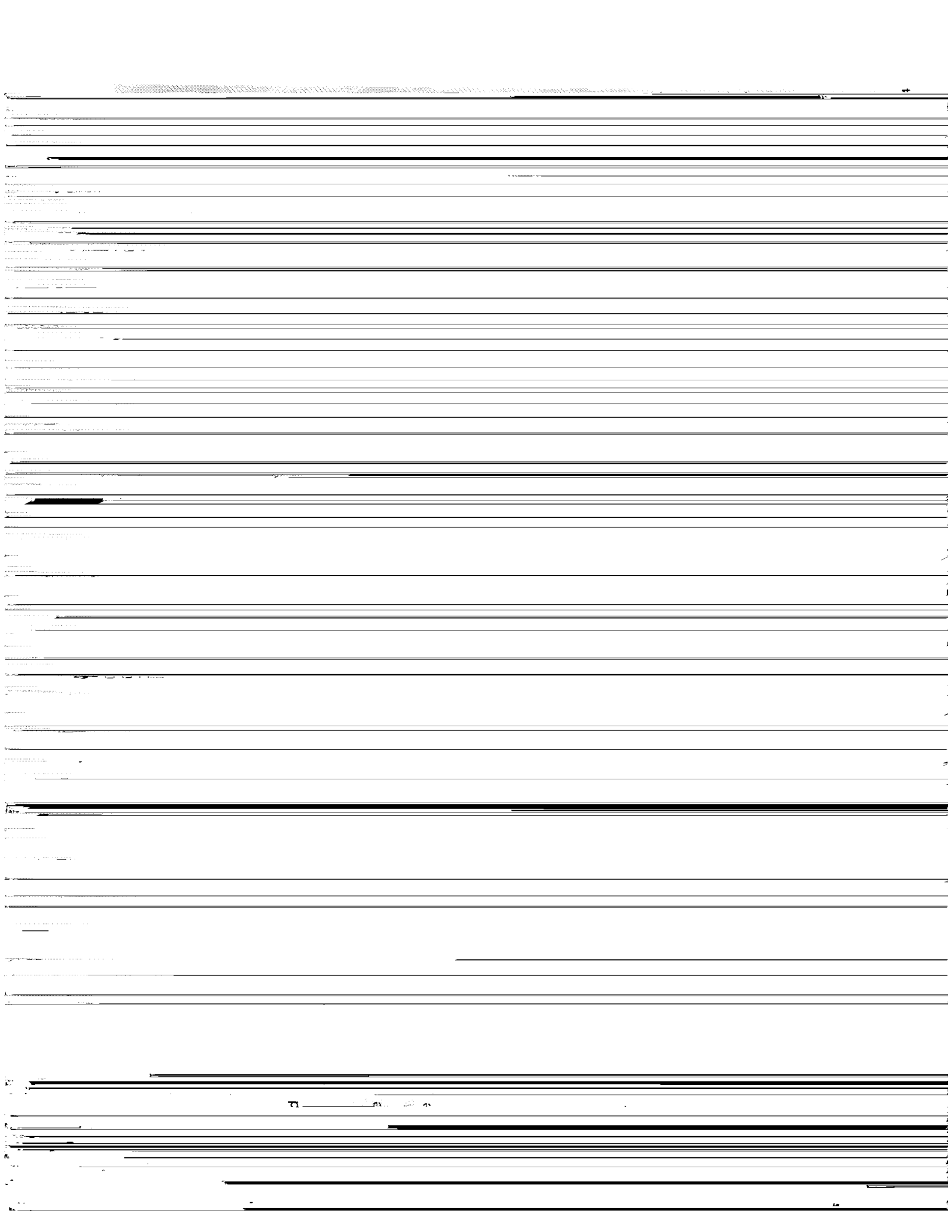
1. Review the **6 C's of policy evaluation** (Concentration, Clarity, Challenge, Changeability, Coordination, and Consistency) to ensure your policy analysis has been complete and thorough.
2. Remember, you are advocating for your policy, but you must also realistically assess the downsides. The results of empirical evaluations of the same or similar policies should be integrated in the policy section to support...

Websites of professional CJ organizations, while not scholarly sources themselves, may lead you to statistics and resources that are scholarly

Books published by **academic presses** like Oxford, North Carolina or other University press also count as scholarly but textbooks and books published by non-academic presses like Penguin, McMillan etc. do not count as scholarly. **Materials used for this class do not count toward your source total but may be used.**

Your reference list must clearly distinguish scholarly from non-scholarly source (i.e. you will have 2 reference lists one designated scholarly and one designated non-scholarly). You must use APA 6th edition reference style (see section on APA below) for your reference list and internal citations within the paper.

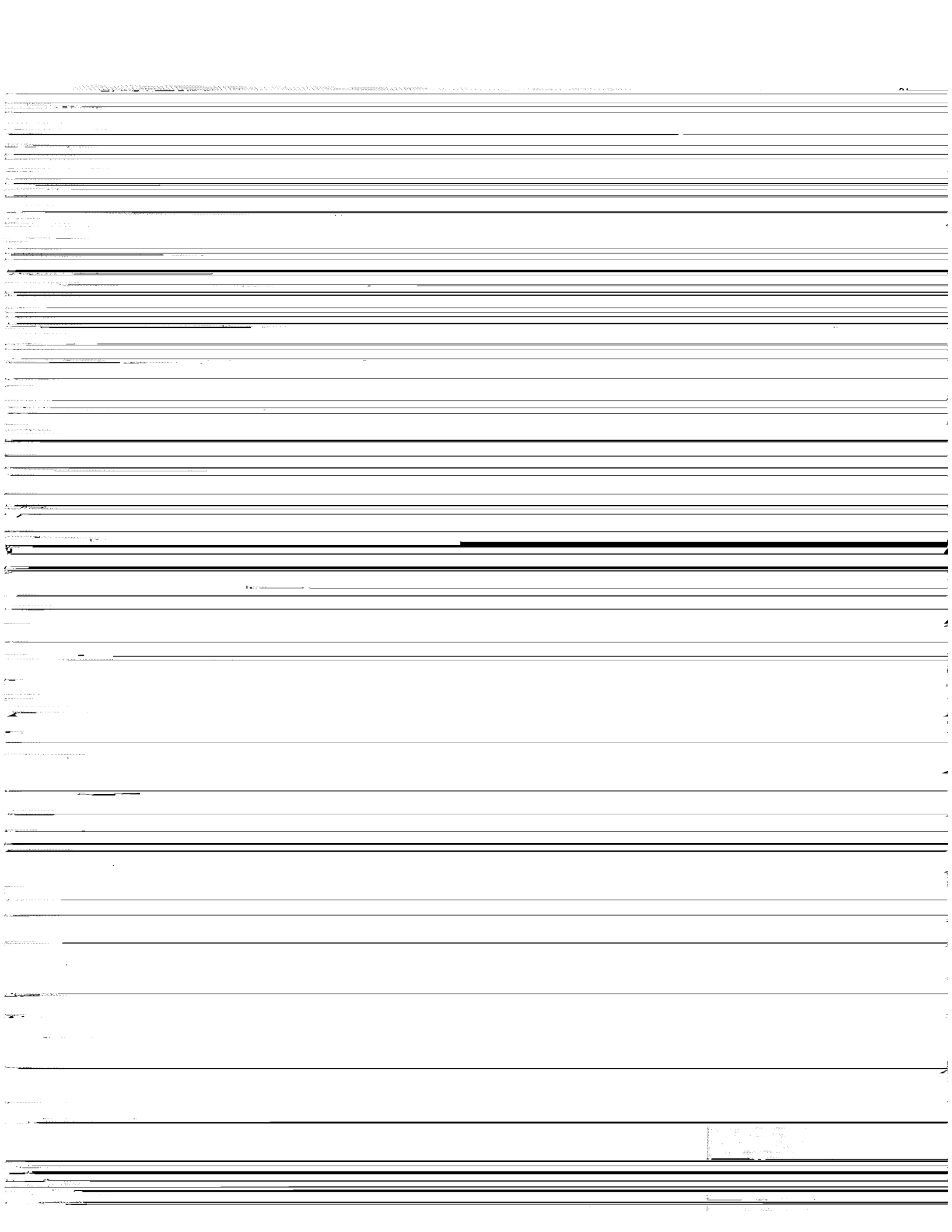
tent
re
the



d.
ant
per.

nd
re

ts
he
) and
ites
for
e,
pbrate
is
ured,
of
of



Data 2023

June

Completed for School
SLO 2

Unit Point	Literature Review 5 Points	Policy 3 Points	Policy Goals 4	Ethical Consideration 3	Multiculturalism and Equity 3 Points	Implementation 4 points	Formatting 3 Points	Grammar 3 Points	Total Points Thesis Paper 35 Points
2	5	2	3	3	2	2	1	2	25
3	5	3	2	2	3	4	3	2	32
3	5	3	2	2	2	4	2.5	2	31.5
3	5	2	3	3	3	1.5	3	3	31.5
3	5	2	3	3	3	3	2	3	31
3	5	3	3	3	3	4	2	3	34
2	5	3	3	3	2	3	2	3	30
2	3.5	2	3	3	3	3	1	3	25.5
2	4	2	2	2	2	3	2	2	25
3	5	3	3	3	3	4	3	3	35
2	5	2	3	3	3	4	1	3	31
3	5	3	3	3	3	4	3	3	35
3	5	3	3	3	3	4	1.5	3	33.5
3	5	3	1	1	3	4	1	3	31
3	5	3	3	3	3	1.5	1	3	30.5
3	5	3	3	3	3	4	2	3	34
3	5	3	3	3	2	1.5	2	3	30.5
3	2	3	1	1	3	4	1	3	28
3	5	3	1	1	3	1.5	3	3	30.5
3	5	4	1.5	1.5	3	1.5	1.5	3	28

22	2	4	5	3	4	1.5	3	1.5	3	30
23	3	4	5	3	4	3	3	3	0	29
24	3	4	5	3	4	3	3	4	3	35
25	3	4	5	3	4	3	3	4	2	34
26	3	4	5	3	4	3	3	4	3	35
27	3	4	5	3	4	3	3	4	3	35
28	3	4	5	3	4	3	3	4	3	35

2	1	3	39	7	7	3	1.5	3	3	1.5	3
2	1	4	39	8	8	4	1.5	3	3	3	3
2	1	4	35	8	8	4	1.5	3	3	3	3
2	1	4	44	8	8	4	1.5	3	3	3	3
1.5	1	4	44.5	8	8	5	1.5	3	3	3	3
2	1	4	45	8	8	5	1.5	3	3	3	3
2	1	4	45	8	8	5	1.5	3	3	3	3

exceeding 80% threshold 20 or Exceeding Threshold 83.3

data

Std Deviat Variance Count
0.63 0.39 25

Maximum Mean
4 3

Count
1
1
18
5
25

Std Deviat Variance Count
0.9 0.81 25

Maximum Mean
4 3

Count
2
1
3
19
25

Std Deviat Variance Count
0.75 0.56 25

Maximum Mean
3

Count
14
7
4

Arguments about punishment

0.00% 0
100% 25

Minimum Maximum Mean

Std Deviat Variance Count

most notable contribution to Social Reaction theory is the argument that society's public behavior as a result of deviant will lead to subsequent punishment. This social process is also known as what?

1 4
24.00% 6
4.00% 1
12.00% 3
60.00% 15
100% 25

.08 1.26 1.59 25

Minimum Maximum Mean

Std Deviat Variance Count

theory most notably influenced practices and nature of the criminal justice system?

2 2
0.00% 0
100.00% 25
0.00% 0
0.00% 0
100% 25

2 0 0 25

Minimum Maximum Mean

Std Deviat Variance Count

being is NOT a core argument made by Social

1 4

.96 0.96 0.92 25

Count

11
5
8
1
25

14.00%
20.00%
32.00%
4.00%
100%

%

law is inked
that

Std Deviat

1.2 1.43 25

Mean

4 3.08

Minimum

1

Count

4
5

16.00%
20.00%

%

contribute
wellbeing.
er from

Std Deviat

0.43 0.19 25

Mean

4 2.12

Minimum

2

Count

0

0.00%

%

s of a
time is

23
1
1
25

Maximum Mean

3

.36

Count

20

1

4

25

Maximum Mean

4

.56

Count

14

9

1

Standard Deviation

0.74

25

0.55

Standard Deviation

0.75

25

0.57

Count

Count

Count

Count

25

Count

25

Count

Std Deviat

0.39

Std Deviat

0.8

Std Deviat

4 2.8 1.1 1.2

Count

3

9

3

10

25

unt

Maximum Mean Std Deviatl Variance

3

2.36

0.84

0.71

Count

6

4

15

0

25

unt

Maximum Mean Std Deviatl Variance

4

3.88

0.59

0.35

Count

1

5

Mean Standard Deviation Variance Count

1.28 0.6 0.36 25

Mean Standard Deviation Variance Count

1.2 0.69 0.48 25

1
1
25

um Mean	Std Deviat	Count
4	2.12	0.91
8		
7		
9		
1		
25		

83 25

um Mean	Std Deviat
2	1.44
14	0.5
11	
0	
0	
25	

Count
0.25 25

um Mean	Std Deviat
4	2.92
1	0.76

Count
0.58 24

td

td

td

nce

nce

ince

0.93

0.29

1.08

nt

nt

unt

5

5

Count
 3
 4
 7
 11
 25

0%
 0%
 0%
 0%
 0%

m Maximum Mean Std Deviat

1 4 2.76 1.36 1.86 25

Count

8
 3
 1
 13
 25

0%
 0%
 0%
 0%
 0%

m Maximum Mean Std Deviat

1 4 2.5 0.71 0.5 24

Count

1
 12
 9

7%
 0%
 0%

ance Count
0.04 25

ati V
.2

ance Count
1.01 25

ati \
01

iance Count

ati

24

Count

24

Count

0.6

1.13

4

Count

% 23

% 0

% 0

% 1

% 24

Maximum Mean Std Deviat Vari

0.8

1.33

4

Count

% 20

% 1

% 2

% 1

% 24

Maximum Mean Std Deviat Vari

74

Count

38

Count

e

.83

Std

Std

8

17
0
7
0
4

n Mean

4
0
0
0
4
4

1

Std Deviatl Variance Count

0 0 24

n Mean

4
13
6
4
1
24

Std Deviatl Variance Count

1 0.89 0.79 24

Count

11

Count

0.5

Count

0.08

4

% Count

always

8.33% 2

indicate
people

91.67% 22
0.00% 0

and jury

0.00% 0
100% 24